

SCIENCE

ENGINEERING

MSSEF

61st ANNUAL

Massachusetts State

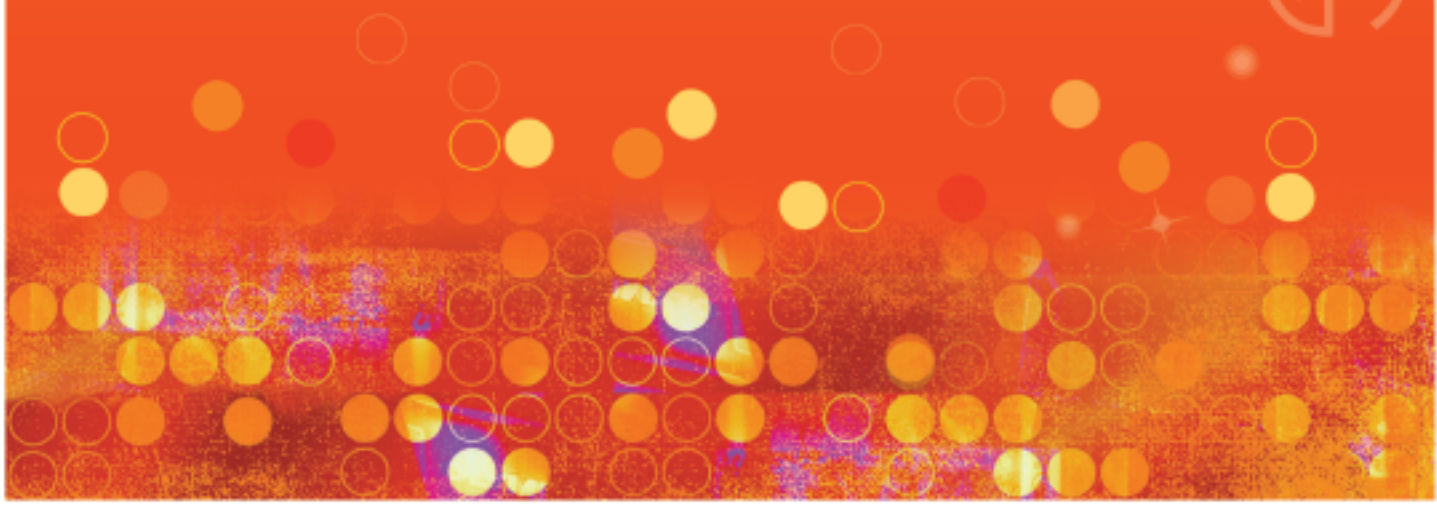
Science &
Engineering

Fair

Saluting Our 2010

Sponsors, Donors & Contributors

APRIL 8, 2010





• SUPPORTING •



At Cabot we strive to be a responsible corporate citizen and a good neighbor by how we operate our facilities and through our philanthropic programs and volunteerism. Our philanthropic activities give priority to science and technology education and community and civic improvement initiatives. These priorities reflect our belief that education is a cornerstone of community sustainability, and our commitment to making a positive and lasting difference in the places where we operate.



"Founded in 1878, Fish & Richardson P.C. is a leading global law firm unlike any other law firm in the world. With over 380 lawyers, the firm is one of the largest practicing IP strategy and counseling, IP litigation, and business litigation. As a law firm that has helped great innovators and entrepreneurs protect their intellectual property, we have a keen interest in promoting science education, and look forward to seeing the next century of great innovators."



Infoscitex provides research, development & engineering solutions to defense, aerospace, security, life science, & energy and environment markets. IST Energy provides environmentally beneficial & economically attractive solutions to energy & environmental markets. Infoscitex Foundation advances educational opportunities for our nation's youth by awarding college scholarships to high school students possessing a high degree of interest and excellence in mathematics, science and technology.



Founded in 1898, Northeastern University is a private research university located in the heart of Boston. Northeastern is a leader in worldwide experiential learning, urban engagement, and interdisciplinary research that meets global and societal needs. Our broad mix of experience-based education programs—our signature cooperative education program, as well as student research, service learning, and global learning—build the connections that enable students to transform their lives. The University offers a comprehensive range of undergraduate and graduate programs leading to degrees through the doctorate in six undergraduate colleges, eight graduate schools, and two part-time divisions.



The University of Massachusetts Boston is a community of scholars that prides itself on academic excellence, diversity, and its commitment to serving students and the Commonwealth through its five undergraduate colleges in liberal arts, science and mathematics, management, nursing and health sciences and public and community service, and two graduate colleges in education and policy studies. The College of Science and Mathematics is strongly committed to the integration of research and teaching, and its students are enriched by opportunities to participate in independent research in productive and exciting research laboratories. Each year, UMass Boston offers a full scholarship to the Massachusetts State Science & Engineering Fair winner who enrolls at the university.



As a leading high technology company and employer headquartered in Hopkinton, Mass., EMC Corporation relies on an innovative and skilled workforce to compete in the global economy. EMC is committed to investing time, talent and financial resources to engage students and encourage science, technology, engineering and mathematics education as the strong foundation needed for the technology innovation and engineering workforce of tomorrow in Massachusetts and around the world.



Genzyme has developed a strategic giving program to support science education and health-related initiatives in communities where Genzyme has a significant business presence. From promoting basic science to raising awareness of the biotechnology industry, Genzyme strongly supports programs that help build excitement and enthusiasm about science education. We are also committed to promoting better understanding of health issues and to increasing the accessibility of health programs.



Intel believes that young people are the key to solving global challenges. A solid math and science foundation coupled with skills such as critical thinking, collaboration and digital literacy are crucial for their success. That is why we get directly involved today in education programs, advocacy, and technology access to enable tomorrow's innovators. Over the past decade alone, Intel has invested more than \$1 billion, and Intel employees have donated more than 2.5 million hours toward improving education in 50 countries.



The Noyce Foundation aims to help young people become curious, thoughtful, and engaged learners. The Noyce Foundation focuses on a few key areas: improving the teaching of math, science and literacy in public schools, developing leadership to support student achievement, education policy and research, and finally, on expanding opportunities for students to experience hands-on science in out-of-school settings



Wheaton College offers an expansive curriculum in the liberal arts and sciences that encourages independent exploration, creative thinking and innovative problem solving. Science and math occupy a central place in curriculum. The college promotes math and science study through partnerships with Battelle, Raytheon and the Southeast Alliance Pipeline project. As part of its merit scholarship program, Wheaton offers a scholarship each year to a Massachusetts State Science and Engineering Fair winner who earns admission to the college. In addition, Wheaton scholars have had outstanding achievement in recent years, including three Rhodes and two Goldwater scholarships.



• S U S T A I N I N G •



• C O N T R I B U T I N G •

ANALOG DEVICES, INC.
BIOGEN IDEC FOUNDATION
MARK IAN GELFAND
IKON OFFICE SOLUTIONS

MILLENNIUM PHARMACEUTICALS, INC.
MILLIPORE FOUNDATION
PFIZER RESEARCH TECHNOLOGY CENTER
SUFFOLK UNIVERSITY
THERMO FISHER FOUNDATION
FOR SCIENCE

UMASS LOWELL
UMASS MEDICAL SCHOOL
WENTWORTH INSTITUTE
OF TECHNOLOGY

• G O L D •

Applied Biosystems/Aplera Corp.
Framingham State College
General Dynamics C4 Systems, Inc.
Harvard Summer School
Secondary School Program
Massachusetts College of Liberal Arts

Merck Institute for Science Education
MIT Public Service Center–
Lemelson–MIT InvenTeams
National Youth Science Camp Foundation

Novartis
PerkinElmer, Inc.
Raytheon Company
The MathWorks, Inc.
US Army Natick RD&E Center
W. R. Grace & Co.

• S I L V E R •

Air & Waste Management Association–
NE Section
Amgen Inc.
Boston Patent Law Foundation
Distrigas of Massachusetts
ImmunoGen, Inc.

Mass. Secondary School Admin. Assn.
Optical Society of America/
New England Section
OSRAM SYLVANIA Products Inc.
Prentice-Hall/Pearson Education

Progress Software Corp.
Sensata Technologies, Inc.
Shire Human Genetic Therapies
Teradyne Inc.
Waters Corp.

• B R O N Z E •

Abbott Bioresearch Center
Cumberland Farms
Timothy A. French, Esq.
Mr. and Mrs. Stuart S. Haber

Massachusetts Chemistry Technology
Alliance, Inc.
Massachusetts Educational
Finance Authority

MIT Educational Studies Program
MIT Lincoln Laboratory
Retirees School Volunteer Association
Ricoh Business Solutions

• P E W T E R •

American Society of Safety Engineers
Eisenstadt/Jean Eisenstadt
Independent Testing Laboratory Assn.
Institute of Food Technologists,
Northeast Chapter

The LaMarche Family
Massachusetts Medical Society
The Ben Eisenstadt Memorial Award

The Foresight Project, Inc.
The Gregory Buck Award
The Harvard University Press
The Pauline J. LaMarche Memorial Award
Mr. and Mrs. John Young

• F R I E N D S •

Acoustical Society of America
Conn. Valley Biological Supply Co.
Nancy G. Degen
Massachusetts Space Grant Consortium

Microsoft Northeast
Northeast Br./American Society for
Microbiology

Society of Women Engineers
The Biophysical Society
United States Air Force
US Navy – Office of Naval Research



• **LEVELS OF SUPPORT** •

SPONSORS

Lead \$150,000 • Supporting \$50,000 • Sustaining \$25,000 • Contributing \$10,000

DONORS

Gold \$5,000 • Silver \$2,500 • Bronze \$1,000 • Pewter \$500 • Friends

EXECUTIVE DIRECTOR

Cora Beth Abel
Tel: 617-491-1508
abel@scifair.com

DIRECTOR OF CORPORATE DEVELOPMENT

Eleanor A. Tishler
Tel: 888-437-3247
etishler@scifair.com



• **IN APPRECIATION** •

We are grateful to our supporters – companies, universities, foundations, individuals and professional organizations, for their help over the past 61 years in advancing inquiry-based learning and science fair programs throughout Massachusetts.

Generous contributions from our sponsors enable us to invest in our schools, communities and children. Working together, we will continue to inspire future generations of science and engineering leaders, build science literacy for all students, and open pathways to college and new careers for students in high-needs communities.

Massachusetts State Science & Engineering Fair, Inc. (MSSEF) is incorporated in the Commonwealth of Massachusetts as a not-for-profit corporation and is a Federal tax-exempt organization under Federal law 501c(3). Federal Tax Exempt Number: 04-2707499

